

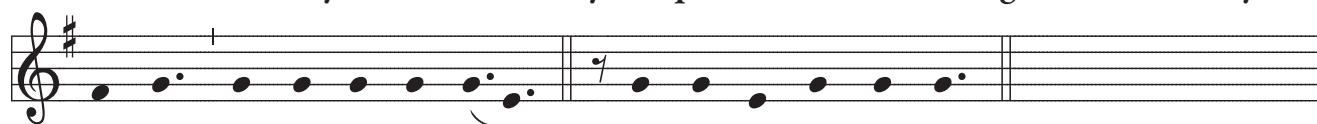
# January 6 : *Epiphany of the Lord*

*Mt 2 : 1-12*

*TONUS RECENTIOR*



The Lord be with you. And with your spir- it. ☩ A reading from the Ho- ly



Gos- pel ac- cording to Luke. Glo- ry to you, O Lord.



When Je- sus was born in Beth- le- hem of Ju- de- a, in the days



of King Her- od, be- hold, ma- gi from the east arrived in Je- ru- sa- lem,



say- ing, "Where is the new-born king of the Jews? We saw his star



at its ris- ing and have come to do him hom- age." When King Her- od



heard this, he was great-ly trou- bled, and all Je- ru- sa- lem with him.



As- semb- ling all the chief priests and the scribes of the peo- ple, He



inquired of them where the Christ was to be born. They said to him,





and on en-ter-ing the house they saw the child with Mar- y his moth- er.



They pros-trat- ed themselves and did him hom- age. Then they o-pened their



trea-sures and of-fered him gifts of gold, frank-in-cense, and myrrh. And



hav-ing been warned in a dream not to re-turn to Her- od, they de-part-



ed for their coun-try by a-noth-er way.



The Gos-pel of the Lord. Praise to you, Lord Je- sus Christ.



*Or:* Praise to you, Lord Je- sus Christ.

---

Chant setting by Fr. Samuel F. Weber, O.S.B. Copyright © 2011 Saint Meinrad Archabbey,  
St. Meinrad, IN 47577-1010 U.S.A. All rights reserved. Used with permission.

[weber@kenrick.edu](mailto:weber@kenrick.edu)

INSTITUTE OF SACRED MUSIC  
Archdiocese of Saint Louis  
5200 Glennon Drive  
St. Louis, MO 63119-4330  
January 2011