

ASCENSION THURSDAY INTROIT

VII d

**Y**

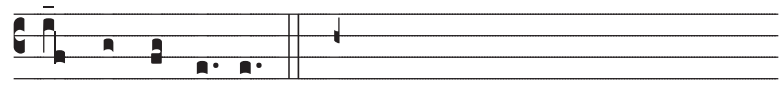
OU men of Ga- li- lee, \* why do you stand



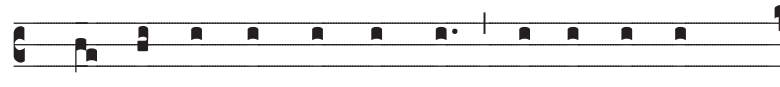
looking up to heav-en? This Je- sus, who has been tak-en



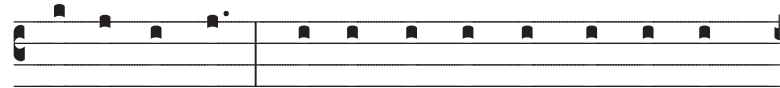
up from you in- to heav- en, will come in the same



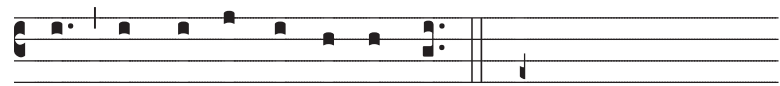
way, al- le- lu- ia.



*Ps.* All you peo-ples, clap your hands, shout to God with



cries of glad-ness, \* for the Lord, the Most High, we must



fear, great king o- ver all the earth. *Ant.*

Antiphon *You Men of Galilee* based on a setting by Columba Kelly, O.S.B. Psalm verse by Samuel F. Weber, O.S.B., Institute of Sacred Music, Archdiocese of Saint Louis, 5200 Glennon Drive, St. Louis, MO 63119-4300. Copyright © 2009 Saint Meinrad Archabbey, St. Meinrad, IN 47577-1010 U.S.A. All rights reserved. weber@kenrick.edu

ASCENSION THURSDAY INTROIT

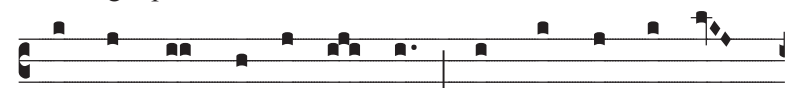
VIII G

**Y**

OU men of Ga- li- lee, \* why do you stand



looking up to heav-en? This Je- sus, who has been tak-en



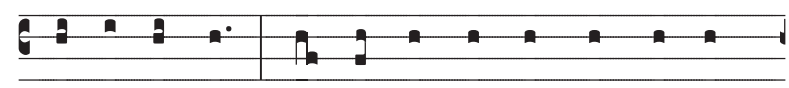
up from you in- to heav- en, will come in the same



way, al- le- lu- ia, al- le- lu- ia.



*Ps.* All you peo-ples, clap your hands, shout to God with



cries of glad-ness, \* for the Lord, the Most High, we must



fear, great king o- ver all the earth. *Ant.*

Chant settings by Samuel F. Weber, O.S.B., Institute of Sacred Music, Archdiocese of Saint Louis, 5200 Glennon Drive, St. Louis, MO 63119-4300. Copyright © 2009 Saint Meinrad Archabbey, St. Meinrad, IN 47577-1010 U.S.A. All rights reserved. weber@kenrick.edu

## ASCENSION THURSDAY INTROIT

VIII G

**Y**

OU men of Ga-li-lee, \* why do you stand

looking up to heav-en ? This Je- sus, who has been tak-en

up from you in- to heav- en, will come in the same

way, al- le- lu- ia, al- le- lu- ia.

*Ps.* All you peo-ples, clap your hands, shout to God with

cries of glad-ness, \* for the Lord, the Most High, we must

fear, great king o- ver all the earth. *Ant.*

*Recto tono :*

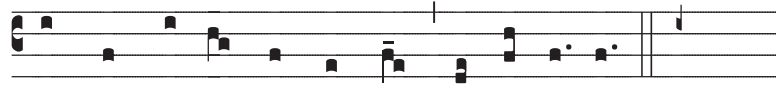
You men of Galilee, / why do you stand looking up to heav-  
en ? / This Jesus, who has been taken up from you into heaven, /  
will come in the same way, / alleluia, alleluia.

### ASCENSION THURSDAY OFFERTORY

*IVA* \*

**G**

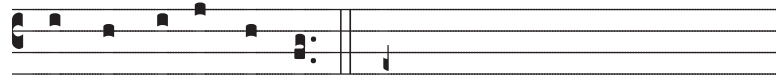
OD mounts his throne \* a- mid shouts of joy ;



the Lord, a- mid trum- pet blasts, al- le- lu- ia.



*Ps.* Let God a- rise, let his foes be scattered, \* let those who



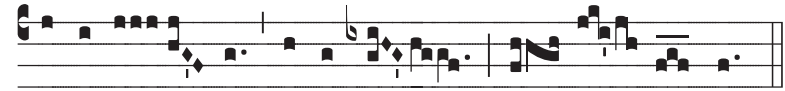
hate him flee be- fore him.

### ASCENSION THURSDAY COMMUNION

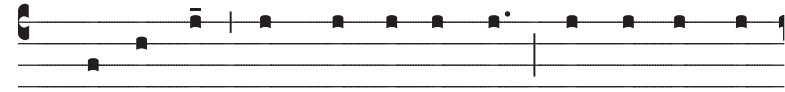
*V*

**C**

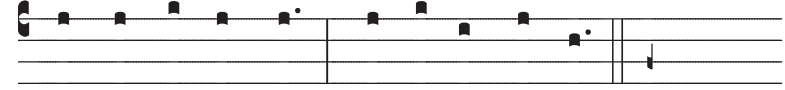
Hant praise to the Lord, \* who ris- es on the heights



of the heav- ens to the east, al- le- lu- ia.



*Ps.* Sing to God, chant praise to his Name, ex- tol him who



rides up- on the clouds, \* ex- ult be- fore him.