

RESPONSORIAL PSALM

Psalm 102

Sacred Heart of Jesus [A]



8. c. The Lord's kindness is ev- er-last-ing to those who fear him.



Bless the Lord, | *O my soul* ;
all my being, bless his | *ho-ly name*.
Bless the Lord, | *O my soul* ;
and forget not | *all his ben-e-fits*. (R)

He pardons all | *your in-i-qui-ties*,
heals | *all your ills*.
He redeems your life | *from de-struc-tion*,
crowns you with kindness | *and com-pas-sion*. (R)

Merciful and gracious | *is the Lord*,
slow to anger and abound- | *ing in kind-ness*.
Not according to our sins | *does he deal* with us,
nor does he requite us according | *to our crimes*. (R)



2. D. Al- le- lu- ia, al- le- lu- ia, al- le- lu- ia.

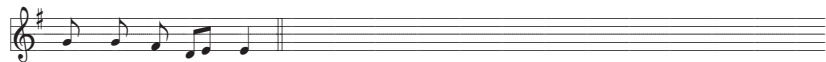
VERSE

Matthew 11 : 29

Sacred Heart of Jesus [A]



Take my yoke up- on you, says the Lord, and learn from me ; for I am meek



and hum-ble of heart.

Chant settings by Samuel F. Weber, O.S.B., INSITUTE OF SACRED MUSIC, Archdiocese of Saint Louis, 5200 Glennon Drive, St. Louis, MO 63119-4300. Copyright © 2011 Saint Meinrad Archabbey, St. Meinrad, IN 47577-1010 U.S.A. All rights reserved. weber@kenrick.edu

RESPONSORIAL PSALM

Psalm 138

Nativity of Saint John the Baptist. Mass During the Day



8. c. I praise you for I am won-der- f'ly made.



O Lord, you have probed me, you know me : /
you know when I sit and | *when I stand* ;
you understand my thoughts | *from a-far*.
My journeys and my | *rest you scru-tin-ize*,
with all my ways you | *are fa-mil-iar*. (R)

Truly you have formed my | *in-most be-ing* ;
you knit me in my | *moth-er's womb*.
I give you thanks that I am fearfully, won- | *der- f'ly made* ;
wonderful | *are your works*. (R)

My soul also you | *knew full well* ;
nor was my frame un- | *known to you*
When I was | *made in se-cret*,
when I was fashioned in the depths | *of the earth*. (R)



2. D. Al- le- lu- ia, al- le- lu- ia, al- le- lu- ia.

VERSE

Luke 1 : 76

Nativity of Saint John the Baptist. Mass During the Day



You, O child, will be called the prophet of the Most High, for you will go



be-fore the Lord to pre-pare his way.

Chant settings by Samuel F. Weber, O.S.B., INSITUTE OF SACRED MUSIC, Archdiocese of Saint Louis, 5200 Glennon Drive, St. Louis, MO 63119-4300. Copyright © 2011 Saint Meinrad Archabbey, St. Meinrad, IN 47577-1010 U.S.A. All rights reserved. weber@kenrick.edu