

SUNDAY III THROUGH THE YEAR

'Proper' of the Mass

**Set to Gregorian Tones
With Organ Accompaniment**

by

Samuel F. Weber, O.S.B.



2006

The 'Proper' of the Mass
for Sundays and Solemnities of the Liturgical Year
commissioned by
Prince of Peace Catholic Church,
Taylors, SC.

2006

Acknowledgements

The English translation of the Psalm responses, the Gospel Acclamation verses, from *The Lectionary for Mass* © 1968, 1981, 1997, ICEL ; the English translation of the Entrance and Communion Antiphons from *The Roman Missal* © 1973 ICEL, Washington, D.C. All rights reserved.

Translations of the Psalms based on *The Book of Psalms* © 1950 and 1995 by the Confraternity of Christian Doctrine, Washington, D.C.

Translation of the Offertory Verse based on the *Douai-Reims version*.

Harmonizations of Latin Psalm tones adapted by the editor from the settings of Carlo Rossini in his classic work '*Proper*' of the Mass for the Entire Liturgical Year, 1933 ff., and from the various harmonizations of Achille Bragers.

English tones and harmonizations by Samuel F. Weber, O.S.B.

Musical settings and compilation © 2006 Saint Meinrad Archabbey, St. Meinrad, IN 47577 U.S.A. All rights reserved.

On the cover : MEDIEVAL CHOIR, Anonymous woodcut from *Der Spiegel des Menschlichen lebens*. Augsburg, 1479.

Contact the editor :

Rev. Samuel F. Weber, O.S.B.
Wake Forest University
The Divinity School
Box 7719
Winston-Salem, NC 27109-7719 U.S.A.
TEL 336.758.4289
EMAIL webersf@wfu.edu

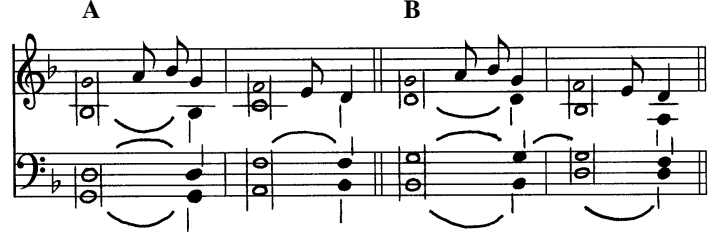
One copy of this project is made available to interested parties for educational purposes only, on a not-for-profit, not for publication basis, for private distribution only. It is hoped that this project will result in a permanent resource once the expected English translation of the *Missale Romanum* (2003) is promulgated.

SUNDAY III THROUGH THE YEAR

Tone 6 F



Tone 7 d



INTROIT

1. Sing a new song *to the Lord* ! *
Sing to the Lord, all *the earth*.
2. Truth and beauty *surround* him, *
he lives in holiness *and glory*.
3. Give to the Lord, you families of nations , /
give to the Lord *glory and praise* ; *
give to the Lord the glory due *his Name*.
4. Glory be to the Father, and *to the Son*, *
and to the Holy **Spirit**.
5. As it was in the beginning, †
is now and *ever shall* be, *
world without end. **Amen**.

*Repetition of the Introit Antiphon : **

Sing a new song to the Lord! |
Sing to the Lord, all the earth. |
Truth and beauty surround him, |
he lives in holiness and | **glory**.

(*)
*Organ accomp.
for the repetition
of the Introit.*



OFFERTORY

1. The right hand of the Lord *has wrought strength* : *
the right hand of the Lord *has exalted* me :
2. I shall not *die, but live*, *
and shall declare the works of *the Lord*.

COMMUNION

- B** I am the light of the world, *says the Lord* ; *
the man who follows me will have the light *of life*.

SUNDAY III

THROUGH THE YEAR

Introit

Cantate Domino.

Psalm 95 : 1-6

Antiphon :

7. Sing a new song to the Lord ! * Sing to the Lord, all the earth. Truth and beau-ty

Musical notation for the first line of the antiphon. It consists of two staves: a treble clef staff and a bass clef staff. The key signature is one sharp (F#). The melody is written in the treble staff, and the organ accompaniment is in the bass staff. The music is in 4/4 time and features a mix of eighth and quarter notes with various rests and phrasing slurs.

sur-round him, he lives in ho-li-ness and glo-ry.

Musical notation for the second line of the antiphon. It consists of two staves: a treble clef staff and a bass clef staff. The key signature is one sharp (F#). The melody continues in the treble staff, and the organ accompaniment continues in the bass staff. The music concludes with a double bar line.

Sunday III Through the Year

Offertory

Dextera Domini.

Psalm 117 : 16. 17

2. The right hand of the Lord * has wrought strength : the right hand of the Lord has ex- alt- ed

Musical notation for the first line of the offertory. It consists of a vocal line on a treble clef staff and an organ accompaniment on a bass clef staff. The key signature has one flat (B-flat), and the time signature is 4/4. The vocal line begins with a quarter rest, followed by a series of eighth and quarter notes. The organ accompaniment features a steady eighth-note bass line and chords in the right hand.

me : I shall not die, but live, and shall de-clare the works of the Lord.

Musical notation for the second line of the offertory. It consists of a vocal line on a treble clef staff and an organ accompaniment on a bass clef staff. The key signature has one flat (B-flat), and the time signature is 4/4. The vocal line continues with eighth and quarter notes, including a fermata over a note. The organ accompaniment continues with a steady eighth-note bass line and chords.

Sunday III Through the Year

Communion

Ego sum lux mundi.

Jn 8 : 12

6. I am the light of the world, * says the Lord ; the man who follows me will have the

The first musical system consists of two staves. The upper staff is in treble clef with a key signature of one flat (B-flat) and a common time signature. It contains a vocal melody with eighth and quarter notes, some with slurs. The lower staff is in bass clef with the same key signature and time signature, providing a harmonic accompaniment with chords and moving lines.

light of life.

The second musical system also consists of two staves. The upper staff is in treble clef with a key signature of one flat and a common time signature. It contains a vocal melody with quarter and eighth notes, ending with a double bar line. The lower staff is in bass clef with the same key signature and time signature, providing a harmonic accompaniment with chords and moving lines, also ending with a double bar line.