

8 December

**SOLEMNITY
OF THE
IMMACULATE CONCEPTION
B.V.M.**

'Proper' of the Mass

Set to Gregorian Psalm-tones
With Organ Accompaniment

by

Samuel F. Weber, O.S.B.



2005

The 'Proper' of the Mass
for Sundays and Solemnities of the Liturgical Year
commissioned by
Prince of Peace Catholic Church,
Taylors, SC.

2005

Acknowledgements

The English translation of the Psalm responses, the Gospel Acclamation verses, from *The Lectionary for Mass* © 1968, 1981, 1997, ICEL ; the English translation of the Entrance and Communion Antiphons from *The Roman Missal* © 1973 ICEL, Washington, D.C. All rights reserved.

Translations of the Psalms based on *The Book of Psalms* © 1950 and 1995 by the Confraternity of Christian Doctrine, Washington, D.C.

Translation of the Offertory Verse based on the *Douai-Reims version*.

Harmonizations of Latin Psalm tones adapted by the editor from the settings of Carlo Rossini in his classic work '*Proper*' of the Mass for the Entire Liturgical Year, 1933 ff., and from the various harmonizations of Achille Bragers.

English tones and harmonizations by Samuel F. Weber, O.S.B.

Musical settings and compilation © 2005 Saint Meinrad Archabbey, St. Meinrad, IN 47577 U.S.A. All rights reserved.

On the cover : MEDIEVAL CHOIR, Anonymous woodcut from *Der Spiegel des Menschlichen lebens*. Augsburg, 1479.

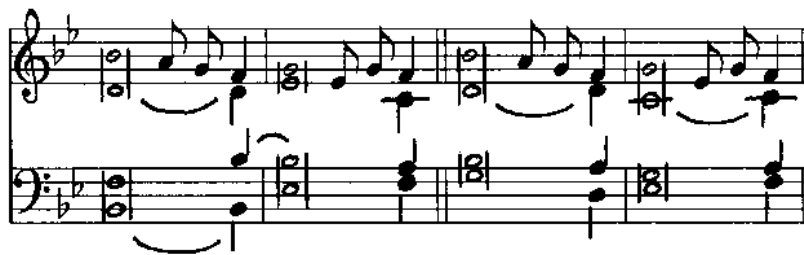
Contact the editor :

Rev. Samuel F. Weber, O.S.B.
Wake Forest University
The Divinity School
Box 7719
Winston-Salem, NC 27109-7719 U.S.A.
TEL 336.758.4289
EMAIL webersf@wfu.edu

One copy of this project is made available to interested parties for educational purposes only, on a not-for-profit, not for publication basis, for private distribution only. It is hoped that this project will result in a permanent resource once the expected English translation of the *Missale Romanum* (2003) is promulgated.

SOLEMNITY OF THE IMMACULATE CONCEPTION B.V.M.

Introit. 6



INTROIT

1. I exult for joy *in the Lord*, *
my soul rejoices *in my God* ;

for he has clothed me in the garment of salvation /
and robed me in the *cloak of justice*, *
like a bride adorned *with her jewels*.
2. I will extol *you, O Lord*, *
for you have *rescued me*,

and have not *let my enemies* *
rejoice *over me*.
3. Glory be to the Father, and *to the Son*, *
and to the *Holy Spirit*.

As it was in the beginning, / is now, and *ever shall* be,
world without *end. Amen*.

At the repetition of the Introit antiphon :

4. I exult for joy in the Lord, my soul rejoices in my God ; |
for he has clothed me in the garment of salvation |
and robed me in the cloak of justice, |
like a bride adorned | **with her jewels**.

OFFERTORY

Hail, Mary, full of grace, / the Lord *is with you* ; *
blessed are you *among women*.

COMMUNION

All honor to *you, O Mary* ! *
From you arose the sun of justice, / *Christ our God*.

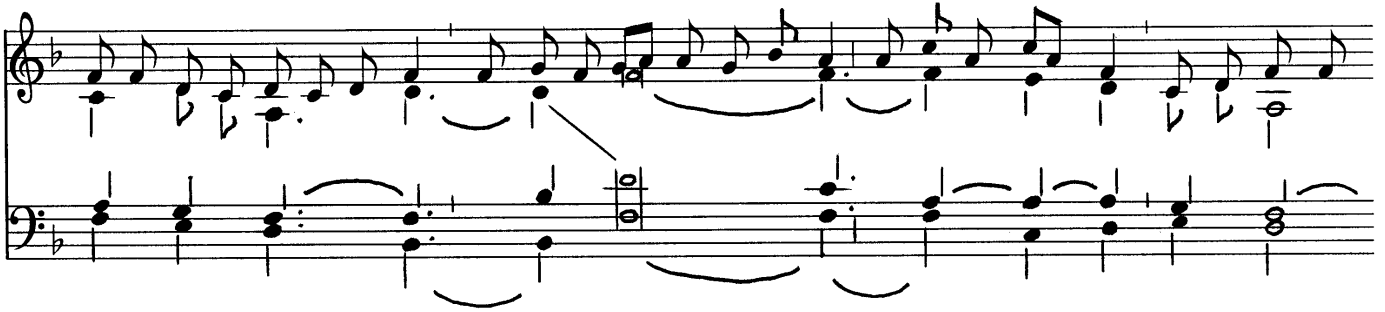
(*)
Organ accomp.
for the repetition
of the Introit.



8 December. Immaculate Conception of the Blessed Virgin Mary

Introit

6. I ex-ult for joy in the Lord, * my soul re-joic- es in my God ; for he has clothed me in the gar-ment



of sal-va- tion and robed me in the cloak of jus- tice, like a bride a- dorned with her jewels.



PSALM 29 SATB or unison with organ accompaniment



1. I will ex- | tol you, O Lord,
for you have *rescued me*,
and have not let my **enemies**
re- | **joice over me.** (R.)
2. Love the Lord, all | you his **faithful ones** !
The Lord keeps those *who are constant*.
Be strong, / let your heart take **courage**,
all you who | **hope in the Lord.** (R.)

8 December. Immaculate Conception of the Blessed Virgin Mary

Psalm Verse : Chant. Psalm 29

6. I will ex- tol you, O Lord, for you have re-scued me, * and have not let my en- e- mies

re- joice o- ver me.

Gloria Patri :

6. Glo- ry be to the Fa- ther, and to the Son, and to the Ho- ly Spir- it. * As it was

in the be- gin- ning, is now and ev- er shall be, world with- out end. A- men.

8 December. Immaculate Conception of the Blessed Virgin Mary

Responsorial Psalm

Cantate Domino canticum novum.

Psalm 97

6. Sing to the Lord a new song, for he has done mar-ve-lous deeds.

The musical notation consists of two staves. The upper staff is a vocal line in G major, 4/4 time, with a melody that begins on G4 and moves through various intervals, including a descending eighth-note line. The lower staff is an organ accompaniment in the same key and time, featuring a simple harmonic accompaniment with chords and moving bass lines.

Psalm Tone

The musical notation consists of two staves. The upper staff is a vocal line in G major, 4/4 time, with a melody that begins on G4 and moves through various intervals, including a descending eighth-note line. The lower staff is an organ accompaniment in the same key and time, featuring a simple harmonic accompaniment with chords and moving bass lines.

Verses

1. Sing to the Lord *a new song*,
for he has done *wondrous deeds* ;
His right hand has won victory *for him*,
his *holy arm*. (R)
2. The Lord has made his salvation **known** :
in the sight of the nations he has *revealed his justice*.
He has remembered his kindness *and his faithfulness*
toward the *house of Israel*. (R)
3. All the ends of the *earth have seen*
the salvation *by our God*.
Sing joyfully to the Lord, *all you lands* ;
break into *song* ; *sing praise*. (R)

8 December. Immaculate Conception of the Blessed Virgin Mary

Alleluia

8. Al- le- lu- ia, al- le- lu- ia, al- le- lu- ia.

A

Musical score for Alleluia part A, featuring a vocal line and a piano accompaniment. The key signature has two flats (B-flat and E-flat), and the time signature is common time (C). The vocal line consists of eighth and quarter notes, while the piano accompaniment features a steady eighth-note bass line and chords in the right hand.

Or :

8. Al- le- lu- ia, al- le- lu- ia, al- le- lu- ia.

B

Musical score for Alleluia part B, featuring a vocal line and a piano accompaniment. The key signature has two flats (B-flat and E-flat), and the time signature is common time (C). The vocal line consists of eighth and quarter notes, while the piano accompaniment features a steady eighth-note bass line and chords in the right hand.

Or :

Organ accompaniment by Carlo Rossini

C

VIII.

Musical score for Alleluia part C, featuring a vocal line and a piano accompaniment. The key signature has two flats (B-flat and E-flat), and the time signature is common time (C). The vocal line consists of eighth and quarter notes, while the piano accompaniment features a steady eighth-note bass line and chords in the right hand. The lyrics "Al - le - lú - ia" are written below the vocal line.

MODE 8

D

Musical score for Mode 8, featuring a vocal line and a piano accompaniment. The key signature has two flats (B-flat and E-flat), and the time signature is common time (C). The vocal line consists of eighth and quarter notes, while the piano accompaniment features a steady eighth-note bass line and chords in the right hand.

Verse

Ave Maria.

Luke 1 : 28

E Hail, Mary, full of grace, / the Lord is with you ; *
blessèd are you among women.

8 December. Immaculate Conception of the Blessed Virgin Mary

8. Al- le- lu- ia.

F

Verse

Ave Maria.

Luke 1 : 28

G

Hail, Mary, full of grace, / the Lord *is with you* ; *
blessèd are you *among women*.

8 December. Immaculate Conception of the Blessed Virgin Mary

OFFERTORY

1. Hail Mar- y, * full of grace, the Lord is with you; bless-ed are you a- mong wo- men, al- le- lu- ia.

Musical score for the first line of the Offertory. It consists of a vocal line (treble clef) and a piano accompaniment (bass clef) in G major. The melody is a simple, flowing line with a mix of eighth and quarter notes. The piano accompaniment provides a harmonic foundation with chords and moving lines.

Text from the *Roman Missal*, 1964. Melody by Columba Kelly, O.S.B. Harmonization by Samuel F. Weber, O.S.B.

Verse 1

1. How shall this be done since I know not man? * The Holy Spirit will come upon you and the power of the Most

Musical score for the first line of Verse 1. It consists of a vocal line (treble clef) and a piano accompaniment (bass clef) in G major. The melody is a simple, flowing line with a mix of eighth and quarter notes. The piano accompaniment provides a harmonic foundation with chords and moving lines.

High will o- ver- shad- ow you. * Bless-ed.

Musical score for the second line of Verse 1. It consists of a vocal line (treble clef) and a piano accompaniment (bass clef) in G major. The melody is a simple, flowing line with a mix of eighth and quarter notes. The piano accompaniment provides a harmonic foundation with chords and moving lines.

Verse 2

There- fore, the child to be born of you will be called ho- ly * the Son of God. *Ant.* Hail Mar- y.

Musical score for the first line of Verse 2. It consists of a vocal line (treble clef) and a piano accompaniment (bass clef) in G major. The melody is a simple, flowing line with a mix of eighth and quarter notes. The piano accompaniment provides a harmonic foundation with chords and moving lines.

Vocal melodies and organ harmonies arranged after traditional sources by Samuel F. Weber, O.S.B. © 2005
Saint Meinrad Archabbey, St. Meinrad, IN 47577-1010 U.S.A. All rights reserved. EMAIL: webersf@wfu.edu

8 December. Immaculate Conception of the Blessed Virgin Mary

Communion

8. All hon- or to you, Mar- y! * From you a- rose the sun of jus- tice, Christ our God.

Musical notation for the first section of the Communion. It consists of a vocal line (treble clef) and an organ accompaniment (bass clef) in G minor. The vocal line begins with a melodic phrase that corresponds to the text "All hon- or to you, Mar- y!". The organ accompaniment provides a harmonic foundation with sustained chords and moving lines.

Verse 1 : Chant

All peo- ple now will call me bless- ed * for he has loved the lowliness of his handmaid. * From you.

Musical notation for Verse 1: Chant. It features a vocal line (treble clef) and an organ accompaniment (bass clef) in G minor. The vocal line is marked with a '4' below the first measure, indicating a four-measure phrase. The organ accompaniment consists of sustained chords and moving lines that support the vocal melody.

The Al- mighty- y has done great things for me, * and ho- ly is his Name. *Ant.* All hon- or

Musical notation for the second section of the Communion. It consists of a vocal line (treble clef) and an organ accompaniment (bass clef) in G minor. The vocal line begins with a melodic phrase that corresponds to the text "The Al- mighty- y has done great things for me, * and ho- ly is his Name. Ant. All hon- or". The organ accompaniment provides a harmonic foundation with sustained chords and moving lines.

And / Or : Verse 2 for Equal Voices (SSA or TTB)

The Almighty has | done great things for me, * and ho- ly is his Name. *Ant.* All

Musical notation for Verse 2 for Equal Voices (SSA or TTB). It features a vocal line (treble clef) and an organ accompaniment (bass clef) in G minor. The vocal line is marked with a '4' below the first measure, indicating a four-measure phrase. The organ accompaniment consists of sustained chords and moving lines that support the vocal melody.

8 December. Immaculate Conception of the Blessed Virgin Mary

Communion

8. All hon-or to you, Mar- y! * From you a- rose the sun of jus- tice, Christ our God.

Psalm Verses : *Unison with organ or SATB a cappella.* Psalm 29

1. I will extol you, O Lord,
for you have *rescued me*,
and have not let my enemies
rejoice over me. (R)
2. Love the Lord, all you *his faithful* ones !
The Lord keeps those *who are constant*.
Be strong, let your *heart take courage*,
all you who hope in the **Lord**. (R)